



SAMPSON COUNTY 911 & ES FACILITIES

CLINTON,
NORTH CAROLINA

CONSTRUCTION
DOCUMENTS

911 BUILDING RCP

DATE	12.04.2020	
PROJECT NO	20003	
REVISIONS		
NUM.	DATE	DESCRIPTION:
REV1	12/17/20	REVISION 01

THIS DRAWING IS THE PROPERTY OF ADW ARCHITECTS, P.A. AND
SHALL NOT BE REPRODUCED OR COPIED IN WHOLE OR IN PART. IT
SHALL NOT BE USED ON ANY OTHER PROJECT OR GIVEN TO ANY
OTHER COMPANY OR AGENCY WITHOUT THE CONSENT OF ADW
ARCHITECTS, P.A.



SHEET NUMBER

A803

SYMBOL LEGEND			
	2' X 4' LED LIGHTING FIXTURE		CEILING FAN
	LED STRIP FIXTURE		SUPPLY AIR CEILING DIFFUSER
	2' X 2' LED LIGHTING FIXTURE		EXHAUST OR RETURN GRILLE
	RECESSED LED LIGHTING FIXTURE		EXHAUST FAN
	WALL MOUNTED LED LIGHTING FIXTURE		ABOVE FINISHED FLOOR
	WALL MOUNTED SPECIAL LIGHTING FIXTURE		CEILING TYPE
	LED STRIP CANOPY FIXTURE		CEILING ELEVATION

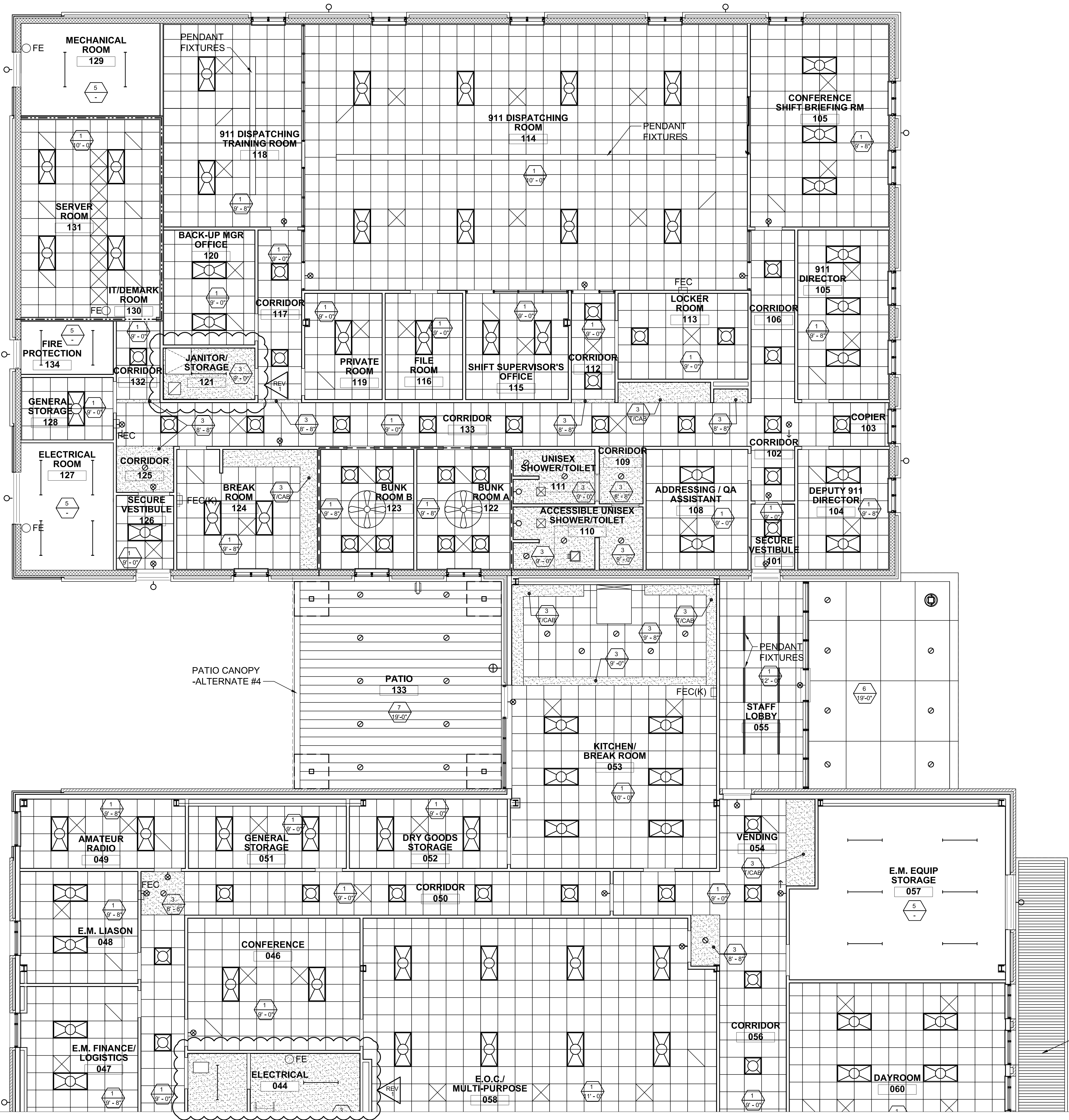
GENERAL NOTES

- ALL CEILING HEIGHTS ARE GIVEN RELATIVE TO FINISH FLOOR IN THAT ROOM UNLESS OTHERWISE NOTED
- TYPICAL CEILING HEIGHT IS 9'-0" UNLESS NOTED OTHERWISE.
- TYPICAL CEILING TYPE IS "1", UNLESS NOTED OTHERWISE.
- SEE ELECTRICAL, PLUMBING, AND MECHANICAL DRAWINGS FOR BALANCE OF INFORMATION.
- SEE SPECIFICATION 09 51 00 FOR BALANCE OF INFORMATION ON CEILING TYPES.
- PAINT ALL EXPOSED STEEL INTELS TO MATCH ADJACENT SURFACES.
- ALL LOW VOLTAGE WIRING ABOVE CEILINGS SHALL BE PLENUM RATED AND RUN CONCEALED WHERE POSSIBLE.
- SPRINKLER LOCATIONS ARE NOT SHOWN. SPRINKLER SHOP DRAWINGS SHOULD BE SUBMITTED TO ARCHITECT FOR APPROVAL AND SHOULD BE COORDINATED WITH MECHANICAL AND ELECTRICAL. ONCE APPROVED BY ARCHITECT/ENGINEERS DRAWINGS MUST BE SUBMITTED TO LOCAL FIRE MARSHAL FOR APPROVAL.
- PROVIDE MISCELLANEOUS FRAMING AS REQUIRED FOR INSTALLATION OF EQUIPMENT, FIXTURES, ETC.
- CONTRACTOR TO COORDINATE EXACT LOCATION OF OVERHEAD EQUIPMENT AND FIXTURES WITH ALL VENDORS AND SUBCONTRACTORS TO AVOID CONFLICTS.
- ALL CEILINGS AND SUSPENDED EQUIPMENT ARE TO BE INSTALLED AS REQUIRED BY ASCE SECTION 9.6 AND ANCHORED PER SCSCB SECTION 1705.12.4.
- SEE ELECTRICAL DWGS. FOR LOCATION OF ALL EMERGENCY LIGHTS, EXIT SIGNS, HORNS, STROBES, & PULL STATIONS.
- ALL LIGHT FIXTURES, SPEAKERS, ETC. IN CEILING ARE TO HAVE WHITE TRIM OR COVERS, UNO.
- ALL EXPOSED SPRINKLER PIPING IN APPARATUS ROOM TO BE PAINTED P-6

CEILING TYPES

TYPE #1 - 2'x2' TESULAR EDGE LAY-IN ACOUSTICAL CEILING - WHITE w/ WHITE GRID
TYPE #2 - 2'x2' LAY-IN ACOUSTICAL CEILING (VINYL COATED) - WHITE w/ WHITE GRID
TYPE #3 - 58" GWB CEILING/SOFFIT PAINTED (PROVIDE MOISTURE RESISTANT GWB BOARD - PAINT AT ALL WET LOCATIONS (P-X) U.N.O.)
TYPE #4 - BASE BID: PAINT ALL EXPOSED SURFACES (P-X)
ALTERNATE #3: ALL METAL DECK SURFACES TO RECEIVE 2" ACOUSTICAL SPRAY INSULATION. ALL STRUCTURAL STEEL, CONDUIT, AND VISIBLE SURFACES TO BE PAINTED TO MATCH THE ACOUSTICAL SPRAY COLOR.
TYPE #5 - OPEN TO STRUCTURE - NOT PAINTED
TYPE #6 - ACM PANELS ON SOFFIT AND FASCIA.
TYPE #7 - METAL SOFFIT AND FASCIA PANELS.

REV 1 GENERAL NOTE COORDINATION



911 BUILDING RCP SCALE: 3/16" = 1'-0"

1